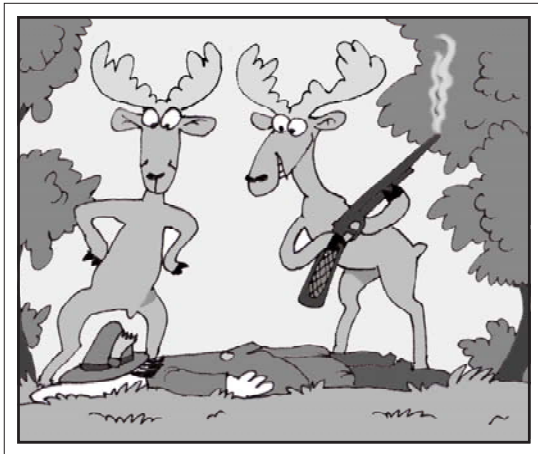


BETWEEN THE DEVIL AND THE DEEP BLUE SEA

means a difficult position where you are facing two equally severe dangers.

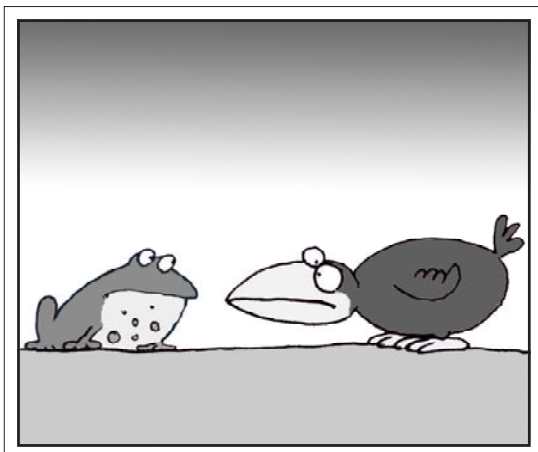
e.g. If we sell our shares now, we will lose a lot of money. But if we wait, we could lose more. We are really caught between the devil and the deep blue sea.



BIG SHOT

is a person who is, or thinks he is, of considerable importance.

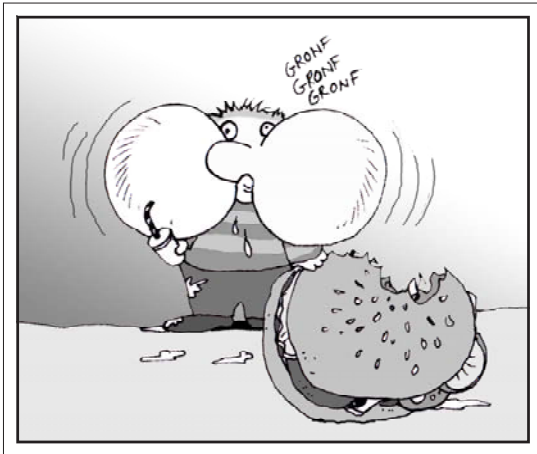
e.g. Everybody has to be on their best behaviour today as some big shot is coming - a Board Member, I think.



BIRD'S-EYE VIEW

is an overview; a broad view

e.g. A good manager should always have a bird's-eye view and keep the overall strategy in mind.



BITE OFF MORE THAN YOU CAN CHEW

means to take on a task that is more than you can handle.

e.g. Reg bit off more than he could chew when he took over the department because he can't solve their problems.



BOTTOMS UP

means to empty the glass in one go. You are likely to hear the expression in a pub or at a party.

e.g. „Bottoms up“, said our boss when we were celebrating the latest sales figures. And he drank his glass of champagne in one go.



BURY THE HATCHET

means to end a dispute and agree to stop fighting.

e.g. We have been fighting each other over this issue for six months now. Don't you think it is time to bury the hatchet and find a solution?